



Concrete Plant International
Worldwide English Edition



1 | 2024

www.cpi-worldwide.com

REPRINT | CONCRETE PRODUCTS & CAST STONE

Innovative retaining wall system
with a natural stone look

WASA®

REPRINT
CPI 1/2024

Simply unbreakable



Built for every demand: Our WASA WOODPLAST® impresses with its joint-free polyurethane coating and all the economic advantages of a solid wood board. Thanks to its fully galvanized steel C profiles, it also offers the best possible protection against damage in the board magazine. The result? An extremely rigid, impact-resistant and break-proof production board.

WASA WOODPLAST® – the light solution for heavy forces.

WASA®

Competence Leadership.



Innovative retaining wall system with a natural stone look

easy block GmbH from Carinthia in Austria is a young company that was founded in 2022 as a promising joint project between two renowned companies, Kandussi Holding and Hirsch Porozell, both also from Carinthia. The easy block system is divided into three different categories: the Base Block, the Standard Block and the Top Block. The Base Block is available in installation depths of 60 cm, 90 cm, 120 cm and up to 150 cm. In the version with an installation depth of 60 cm, each block weighs 640 kg, while the heaviest version with a dead weight of 1,200 kg is designed for particularly high retaining walls.

Austria's geographical location, characterised by imposing Alpine and low mountain landscapes, poses a constant challenge for construction projects in the private and public sectors that have to deal with the region's altitude profile. This is where easy block comes in with a retaining wall and slope stabilisation system developed in Europe. The modular design of the concrete blocks allows for straight, angular, curved and stepped walls or slope stabilisation, allowing the easy block to blend perfectly into the landscape.

The concrete blocks are visually characterised by their true-to-the-original natural stone structure, which ensures an authentic stone look.

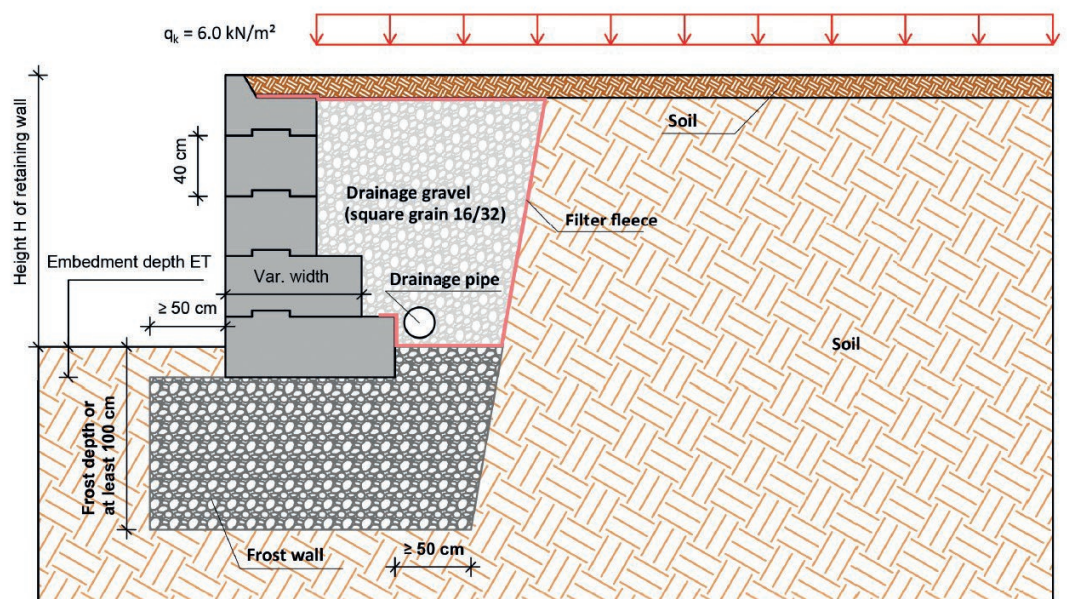


Erik Nelson, Architect AIA,
MNAL, RIBA

licensed professional architect, accredited in Norway, the USA, and the UK, with a specialization in concrete retaining wall systems, assumed the role of Director of International Sales at easy block GmbH in Austria in September 2023. With over 25 years of experience in the concrete industry, he has a notable track record of establishing a number of leading Retaining Wall licensing companies, expanding from North America to the global market.

In co-operation with the Construct division of Wasa Compound GmbH & Co. KG from Neubrunn, Germany, various models and tools were designed for the production of the form liners. David Werning, the authorised signatory responsible for Wasa Construct, recalls that Wasa received the first project enquiry at the beginning of 2022 from Mr Helmut Kandussi, Managing Director of easy block GmbH, at the World of Concrete in Las Vegas.

Installation example of the construction of a slope retaining wall in accordance with the static test from the easy block manual. The Base Block is available in installation depths of 60 cm, 90 cm, 120 cm and up to 150 cm and determines the maximum possible height of the wall.





Textured form liners made of polyurethane are available in different versions and were manufactured precisely for the EPS (foam polystyrene) moulds from easy block.

Mould for the production of corner former lines. The peripheral structure of the corners and sides was modelled on the mould from a flat template, Wasa Stonecast Gneiss 3.



At this point, the overall project was already well advanced. The various types already existed as 3D models with all the design details. Preliminary tests conducted by easy block with simple textured form liners did not fulfil the optical requirements to stand out from existing systems on the market.

The data provided by the customer for the virtual and true-to-scale 3D models was seamlessly integrated into Wasa's CAD planning tool. During a joint two-day workshop, Wasa presented its mould solution and various possible structures for the product. The project managers selected the Wasa Stonecast, Gneiss 3 category. The original natural stone template is a large-format and coarsely textured crust slab.

When designing the model, Wasa did not limit itself exclusively to a two-dimensional surface. For a true-to-the-original natural stone look, the side structures were modelled in accordance with the design specifications in the in-house model making department.

The design of the 90° corner blocks represented a further and special challenge for Wasa's model making department. According to easy block's wishes, the subsequent concrete block was to be a complete block without a parting line or unclear line caused by a two-part form liner.

The EPS moulds are equipped with up to 10 different textured form liners to ensure a variety of different surfaces and a non-monotonous appearance of the concrete blocks. The realisation of the design requirements and the result convinced not only easy block. Even during the prototype phase, concrete block producers showed interest in adding the innovative system to their product portfolio.

The positive market interest supports the original idea of marketing a system for retaining walls and slope stabilisation, made in Europe, beyond the borders of Austria in licence partnerships. In the course of acquiring new customers, Mr Erik Nelson, a professional architect, was recruited as international sales director for easy block.



Assembled EPS mould (foam polystyrene). The Wasa textured form liners are inserted into the lower halves of the mould. The flexible polyurethane form liner also makes it possible to seal the assembled mould components.



The 3-D concept: Different structures or shapes are possible by simply replacing the PU form liner. The areas of application range from slope stabilisation to garden and landscape design, bank reinforcement of lakes and rivers and infrastructure projects of all kinds.



The modular principle enables the wall to be erected quickly and easily. The easy block system consists of three different categories: Base Block, Standard Block and Top Block



The concrete blocks look like mighty and natural boulders. Thanks to Wasa's mould solution, easy block is produced without parting lines or unclean lines.

FURTHER INFORMATION



easy block GmbH
Altglandorf 22
9300 St. Veit an der Glan, Austria
T +43 4212 5454
info@easyblock.at
www.easyblock.at



WASA Compound GmbH & Co. KG
Meininger Straße 9
98617 Neubrunn, Germany
T +49 36947 5670
wetcast@wasa-technologies.com
www.wasa-technologies.com